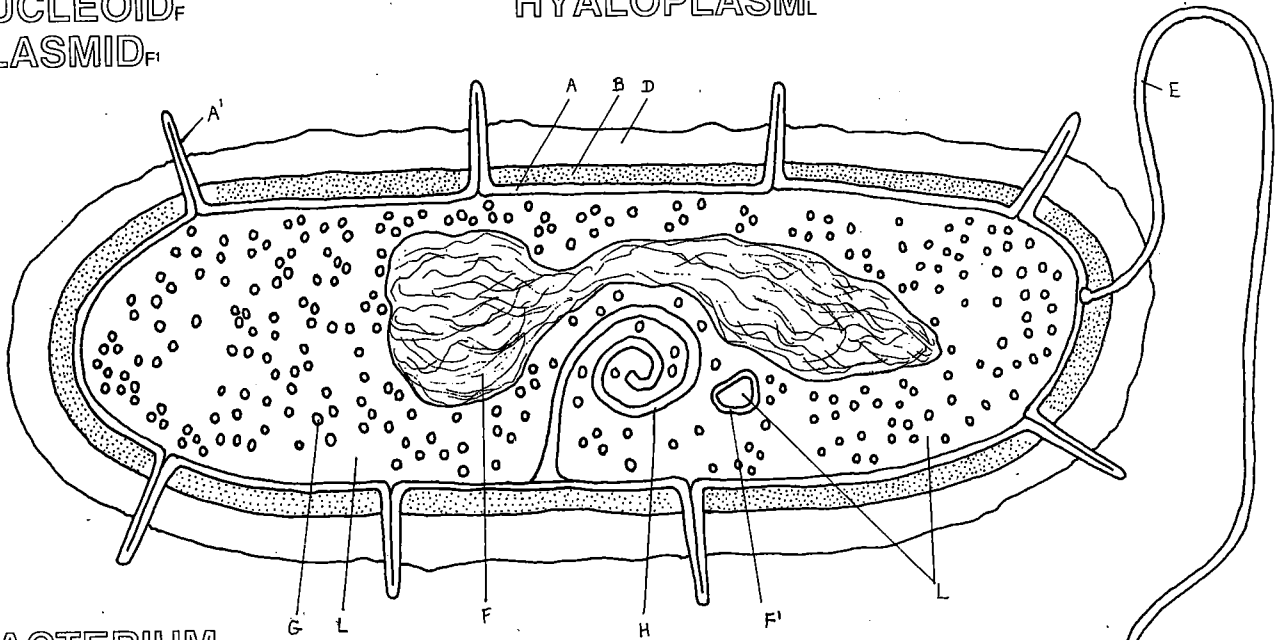


PROKARYOTIC CELLS.

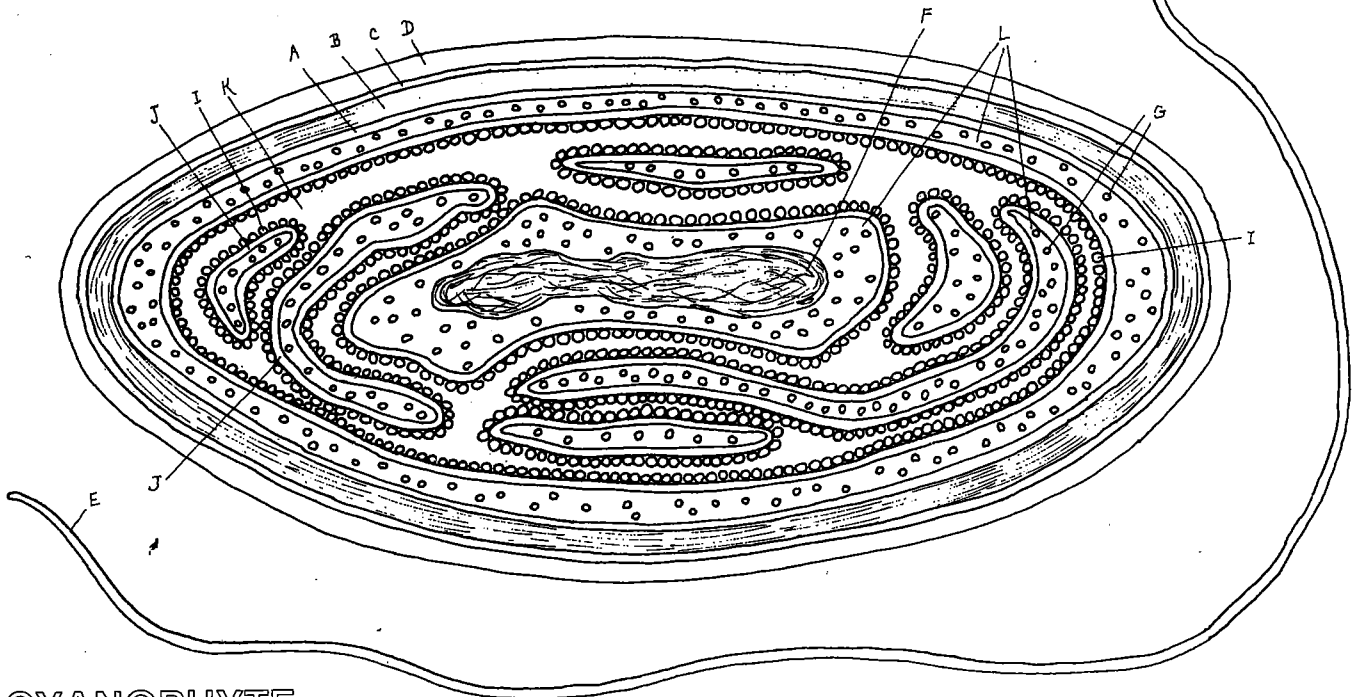
- ★ CELL MEMBRANE_A
- ★ PILUS_{A'}
- ★ CELL WALL_B
- ★ OUTER MEMBRANE_C
- ★ CAPSULE_D
- ★ FLAGELLUM_E
- ★ NUCLEOID_F
- ★ PLASMID_{F'}

- ★ CYTOPLASM_G
- ★ RIBOSOME_H
- MESOSOME_H
- PHYCOBILISOME_I
- THYLAKOID MEMBRANE_J
- THYLAKOID COMPARTMENT_K
- HYALOPLASM_L

COLOUR CODE
EACH
STRUCTURE
WITH
STAR
★



BACTERIUM★
X 70,000



CYANOPHYTE★
X 70,000

EUKARYOTIC CELLS:

ANIMAL CELL.

IF IT HAS
THIS
STAR *
COLOUR,
CODE IT

★ CELL MEMBRANE_A

- NUCLEUS_★

★ NUCLEAR ENVELOPE_B

★ NUCLEAR PORE_C

★ NUCLEOLUS_D

★ CHROMATIN_E

NUCLEAR SAP_{F+}

- CYTOPLASM_★ LEAVE WHITE

★ MITOCHONDRION_G

GOLGI COMPLEX_H

CENTRIOLE_I

MICROTUBULE_J

VACUOLE_K

LYSOSOME_L

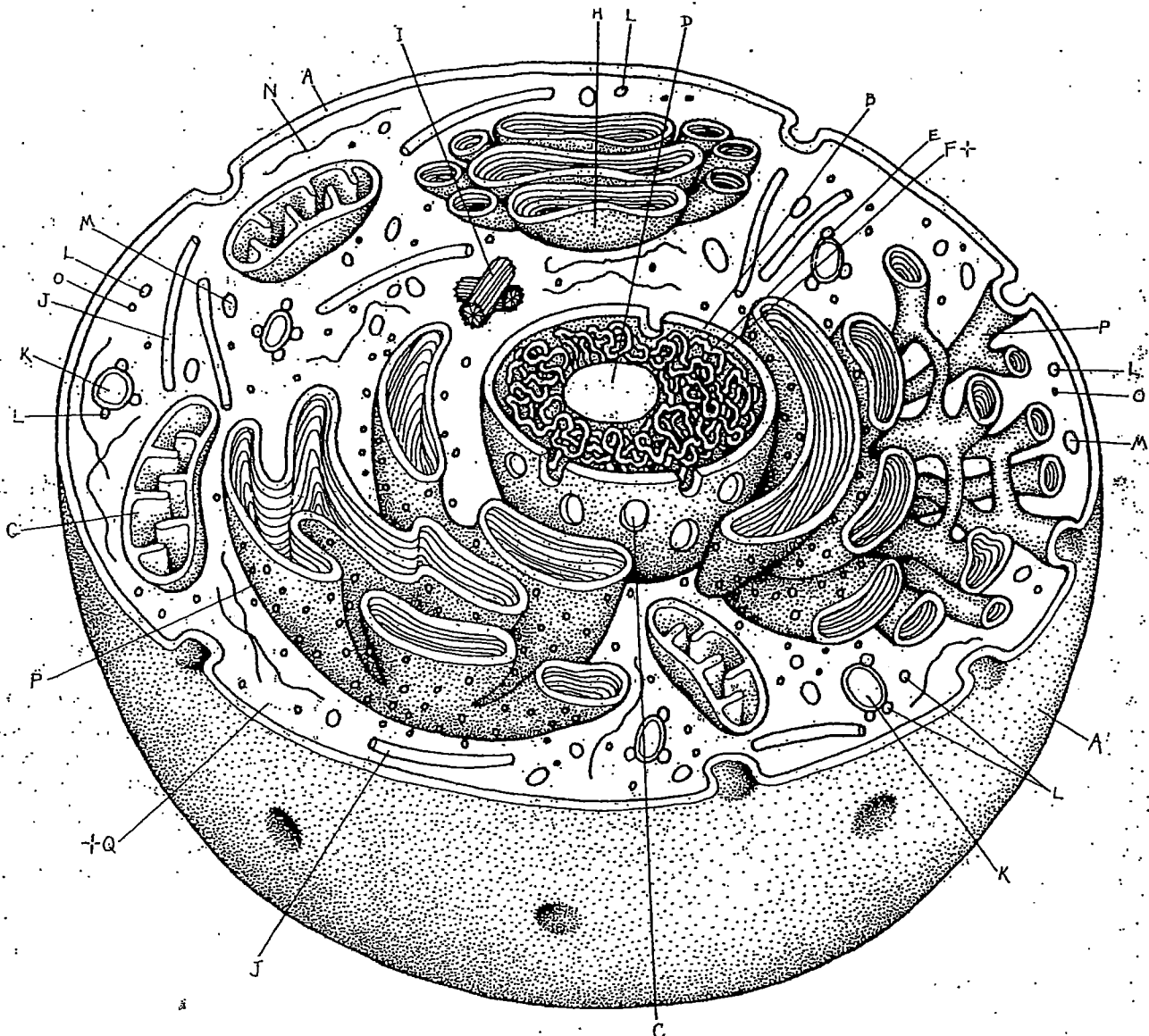
MICROBODY_M

MICROFILAMENT_N

★ RIBOSOME_O

ENDOPLASMIC RETICULUM_P

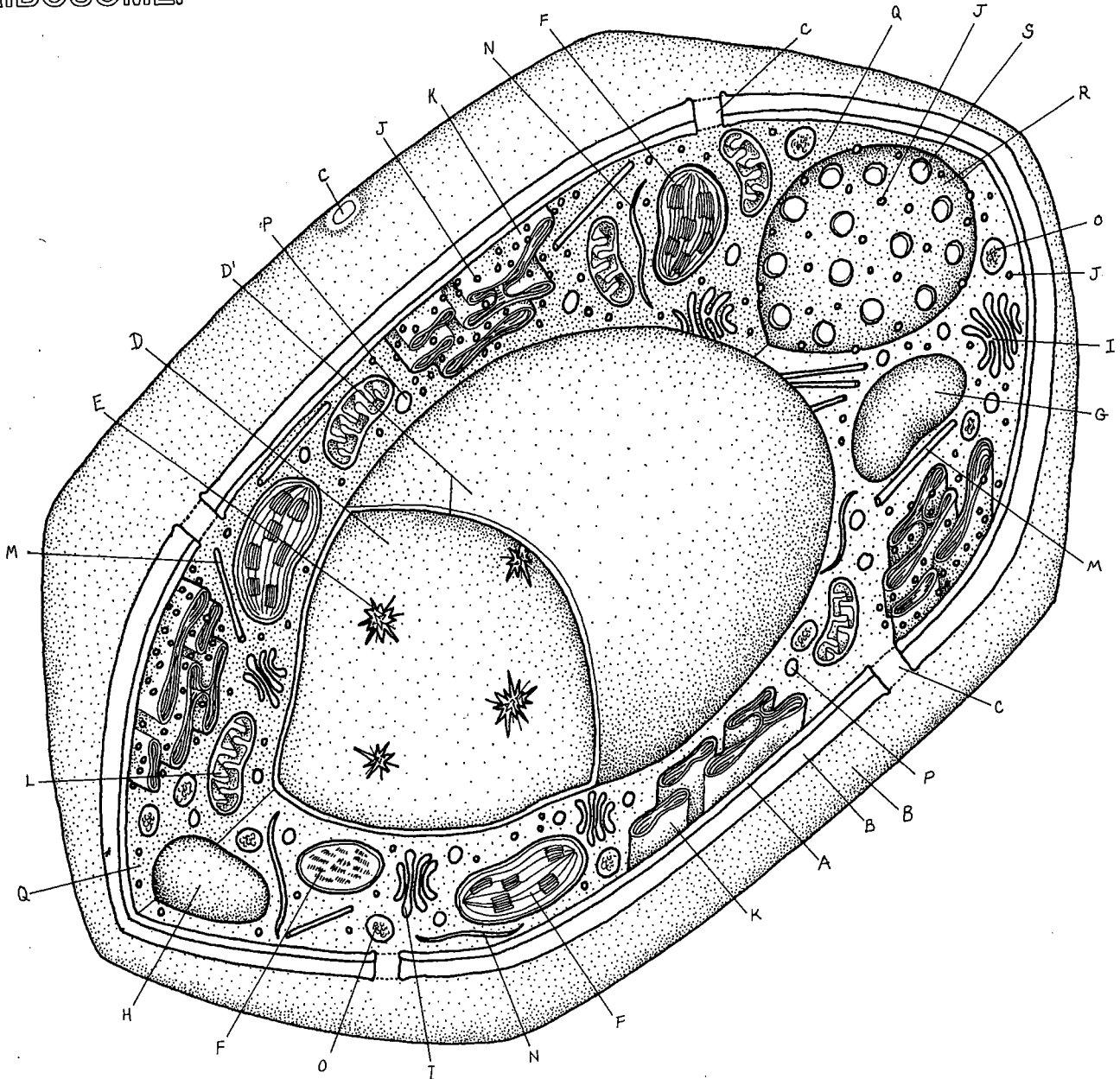
HYALOPLASM₊ (CYTOSOL)



PLANT CELL.

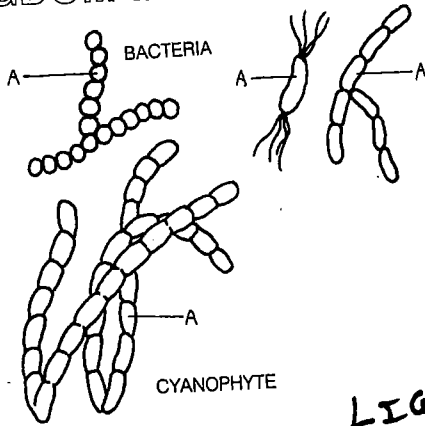
- * CELL MEMBRANE.
- * CELL WALL.
- PLASMODESMA.
- * VACUOLE.
- * TONOPLAST.
- CRYSTAL.
- PLASTIDS.
- * CHLOROPLAST.
- LEUCOPLAST.
- CHROMOPLAST.
- GOLGI COMPLEX.
- * RIBOSOME.

- ENDOPLASMIC RETICULUM.
- * MITOCHONDRION.
- MICROTUBULE.
- MICROFILAMENT.
- LYSOSOME.
- MICROBODY.
- HYALOPLASM.
- NUCLEUS.
- * NUCLEAR ENVELOPE.
- * NUCLEAR PORE.

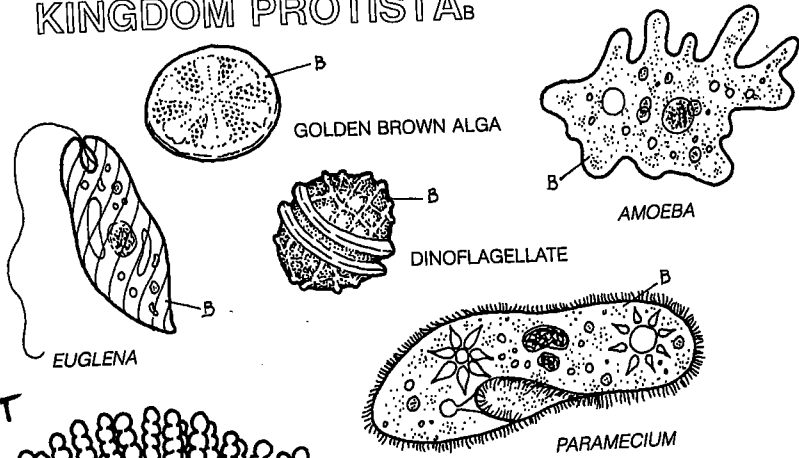


KINGDOMS OF THE LIVING WORLD.

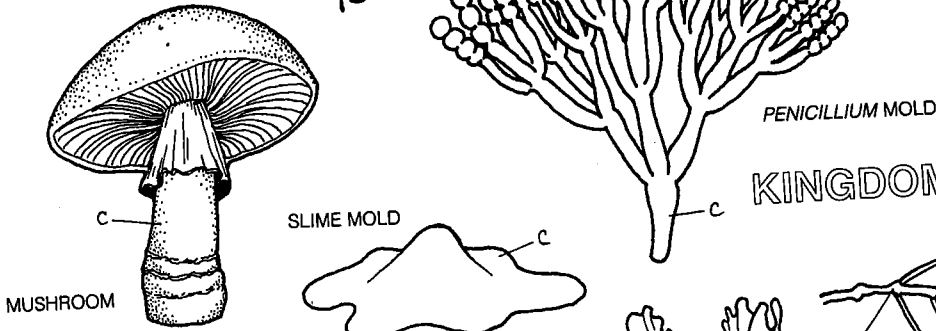
KINGDOM MONERA - ALL BLUE



KINGDOM PROTISTA - EACH YELLOW



KINGDOM FUNGI - LIGHT BROWN



KINGDOM PLANTAE - GREEN

KINGDOM ANIMALIAE - PURPLE

