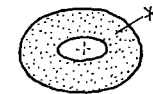


X. DIGESTIVE SYSTEM OVERVIEW OF THE SYSTEM

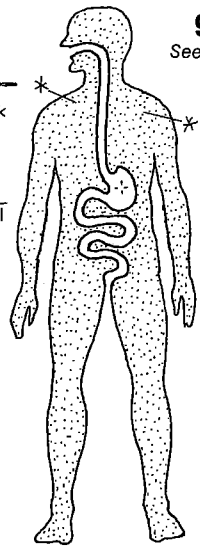
* Color-Code
NAME: _____

CN: When coloring the organs that overlap each other, use your lightest colors for D, E, T, V, and W. Each overlapping portion receives the color of both structures. (1) After coloring the alimentary canal, review the structures before completing the accessory organs. The central section of the transverse colon (J) has been removed to show deeper structures.

Block: _____



Alimentary canal is like the hole in a doughnut



ALIMENTARY CANAL: *

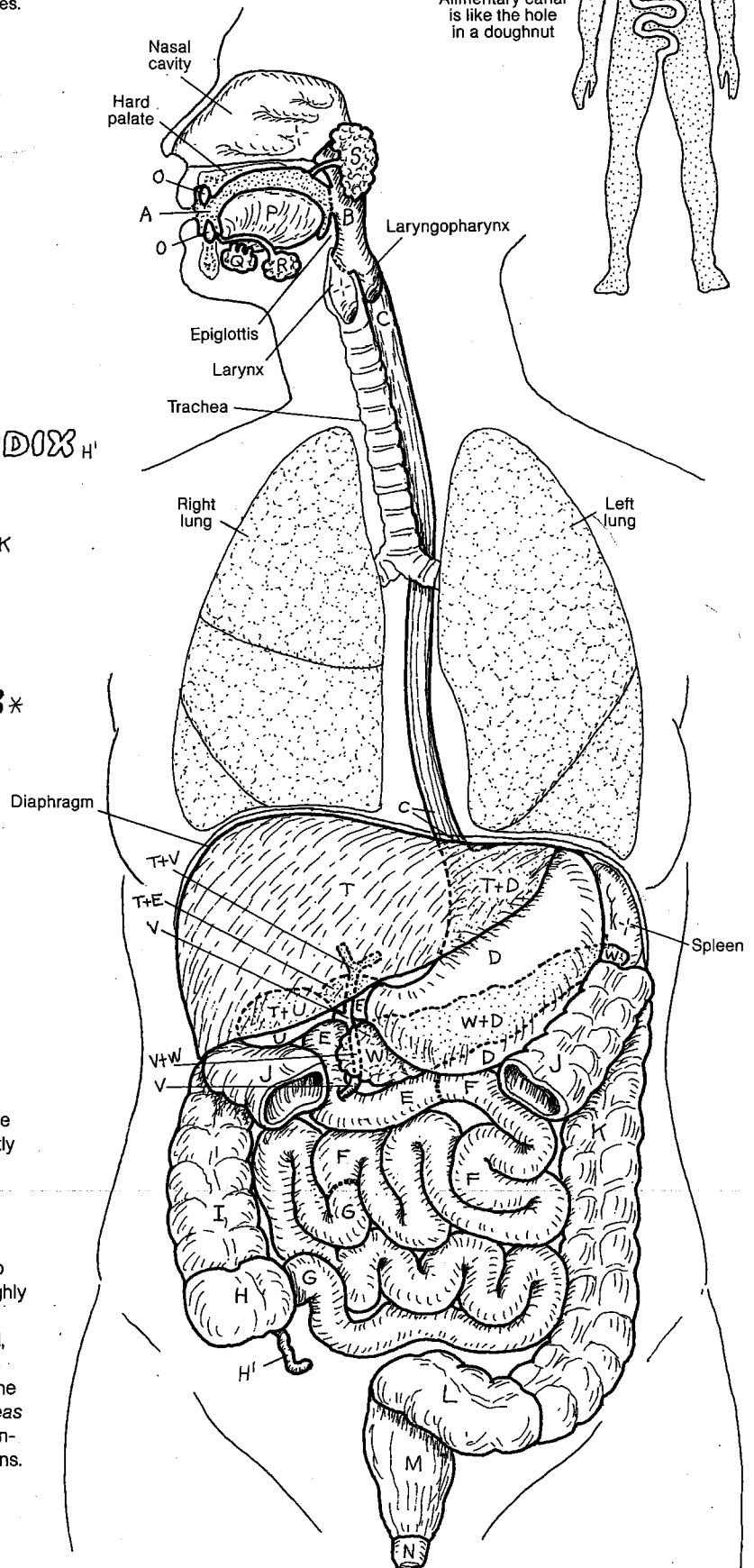
- ORAL CAVITY^A
- PHARYNX^B
- ESOPHAGUS^C
- STOMACH^D
- SMALL INTESTINE: *
- DUODENUM^E
- JEJUNUM^F
- ILEUM^G
- LARGE INTESTINE: †
- CECUM^H
- VERMIFORM APPENDIX^{H'}
- ASCENDING COLON^I
- TRANSVERSE COLON^J
- DESCENDING COLON^K
- SIGMOID COLON^L
- RECTUM^M
- ANAL CANAL^N

ACCESSORY ORGANS: *

- TEETH.
- TONGUE^P
- SALIVARY GLANDS: *
- SUBLINGUAL.
- SUBMANDIBULAR^R
- PAROTID^S
- LIVER^T
- GALL BLADDER^U
- BILE DUCTS^V
- PANCREAS^W

The digestive system consists of an alimentary canal with accessory organs. The canal begins with the oral cavity. Here the teeth pulverize ingested food while it is softened and partly digested by salivary gland secretions. The tongue aids in mechanical manipulation of the food, and literally flips the food into the fibromuscular pharynx during swallowing.

The esophagus moves the bolus along to the stomach by peristaltic muscular contractions. Here the bolus is treated to mechanical and chemical digestion, then passed into the highly coiled small intestine for more enzymatic and mechanical digestive processes. Small molecular nutrients are extracted, absorbed by lining cells, and transferred to capillaries. Liver-produced bile, stored in the gall bladder, is discharged into the duodenum by bile ducts. Digestive enzymes from the pancreas enter the duodenum as well. The large intestine is mainly concerned with absorption of water, minerals, and certain vitamins. The non-nutritive residue of the ingested bolus is moved through the rectum and anal canal to the outside. Nutrients absorbed throughout the tract are transported to the liver by the hepatic portal system for processing and distribution to the body's cells.



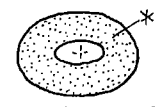
X. DIGESTIVE SYSTEM

OVERVIEW OF THE SYSTEM

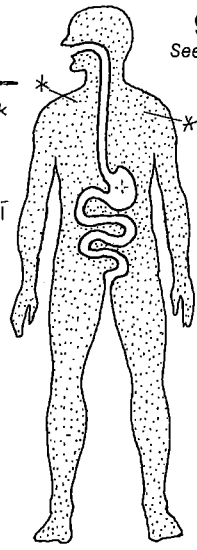
★ Color-Code
NAME: _____

CN: When coloring the organs that overlap each other, use your lightest colors for D, E, T, V, and W. Each overlapping portion receives the color of both structures. (1) After coloring the alimentary canal, review the structures before completing the accessory organs. The central section of the transverse colon (J) has been removed to show deeper structures.

BLOCK: _____



Alimentary canal is like the hole in a doughnut

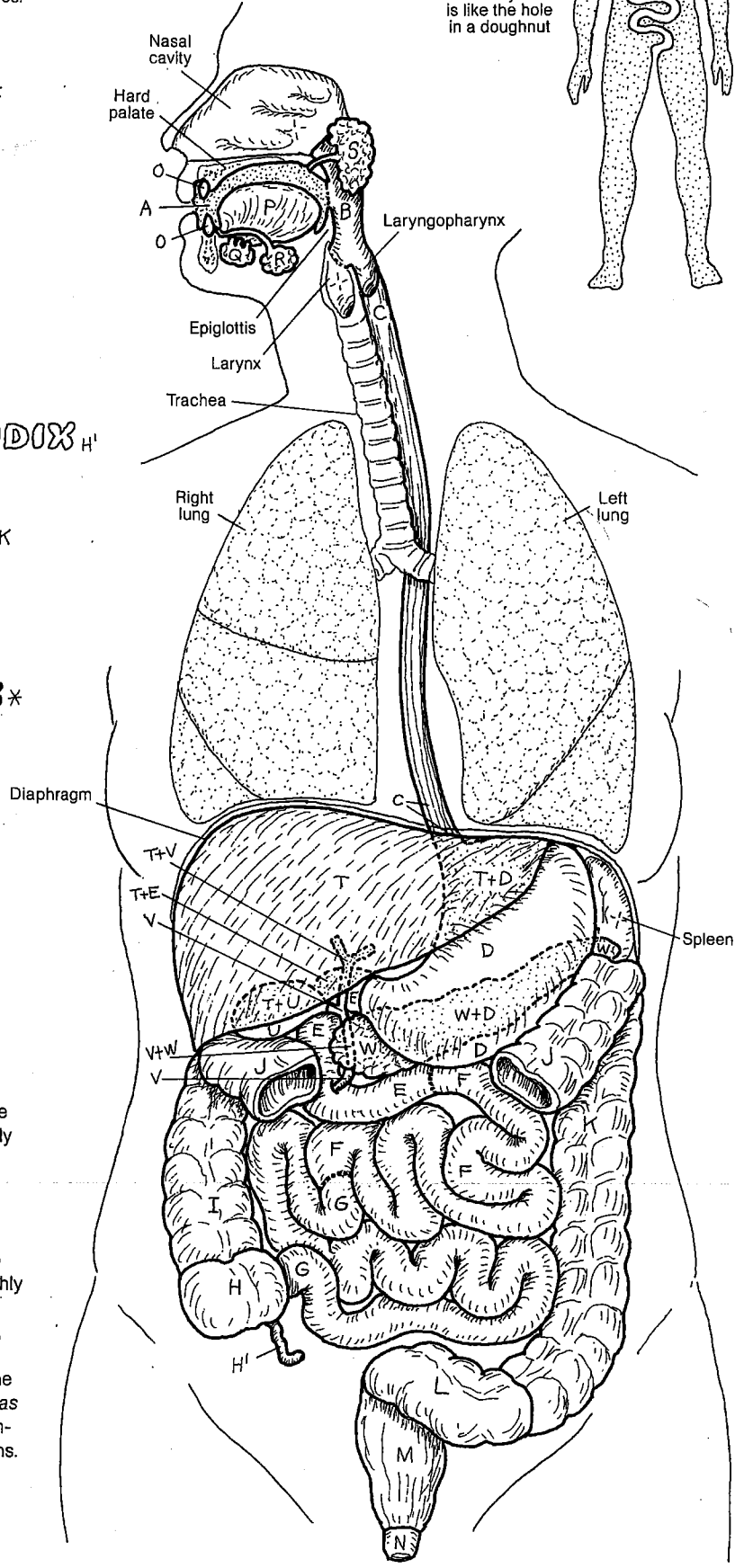


ALIMENTARY CANAL: *

- ORAL CAVITY_A
- PHARYNX_B
- ESOPHAGUS_C
- STOMACH_D
- SMALL INTESTINE: *
- DUODENUM_E
- JEJUNUM_F
- ILEUM_G
- LARGE INTESTINE: †
- CECUM_H
- VERMIFORM APPENDIX_{H'}
- ASCENDING COLON_I
- TRANSVERSE COLON_J
- DESCENDING COLON_K
- SIGMOID COLON_L
- RECTUM_M
- ANAL CANAL_N

ACCESSORY ORGANS: *

- TEETH_O
- TONGUE_P
- SALIVARY GLANDS: *
- SUBLINGUAL_Q
- SUBMANDIBULAR_R
- PAROTID_S
- LIVER_T
- GALL BLADDER_U
- BILE DUCTS_V
- PANCREAS_W



The digestive system consists of an alimentary canal with accessory organs. The canal begins with the oral cavity. Here the teeth pulverize ingested food while it is softened and partly digested by salivary gland secretions. The tongue aids in mechanical manipulation of the food, and literally flips the food into the fibromuscular pharynx during swallowing.

The esophagus moves the bolus along to the stomach by peristaltic muscular contractions. Here the bolus is treated to mechanical and chemical digestion, then passed into the highly coiled small intestine for more enzymatic and mechanical digestive processes. Small molecular nutrients are extracted, absorbed by lining cells, and transferred to capillaries. Liver-produced bile, stored in the gall bladder, is discharged into the duodenum by bile ducts. Digestive enzymes from the pancreas enter the duodenum as well. The large intestine is mainly concerned with absorption of water, minerals, and certain vitamins. The non-nutritive residue of the ingested bolus is moved through the rectum and anal canal to the outside. Nutrients absorbed throughout the tract are transported to the liver by the hepatic portal system for processing and distribution to the body's cells.