

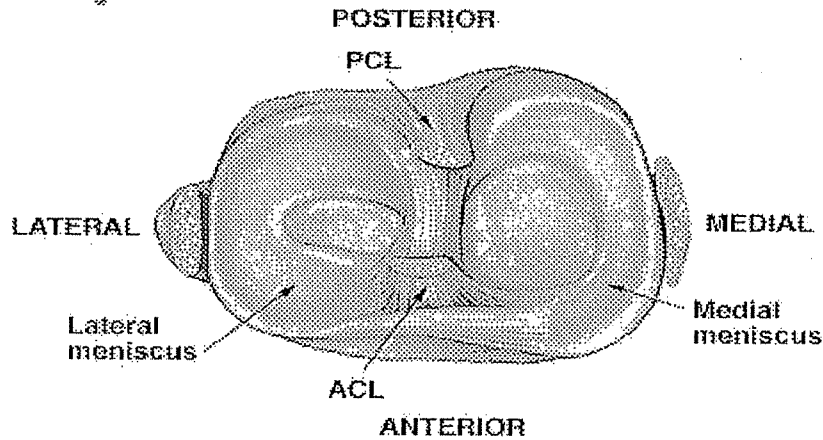
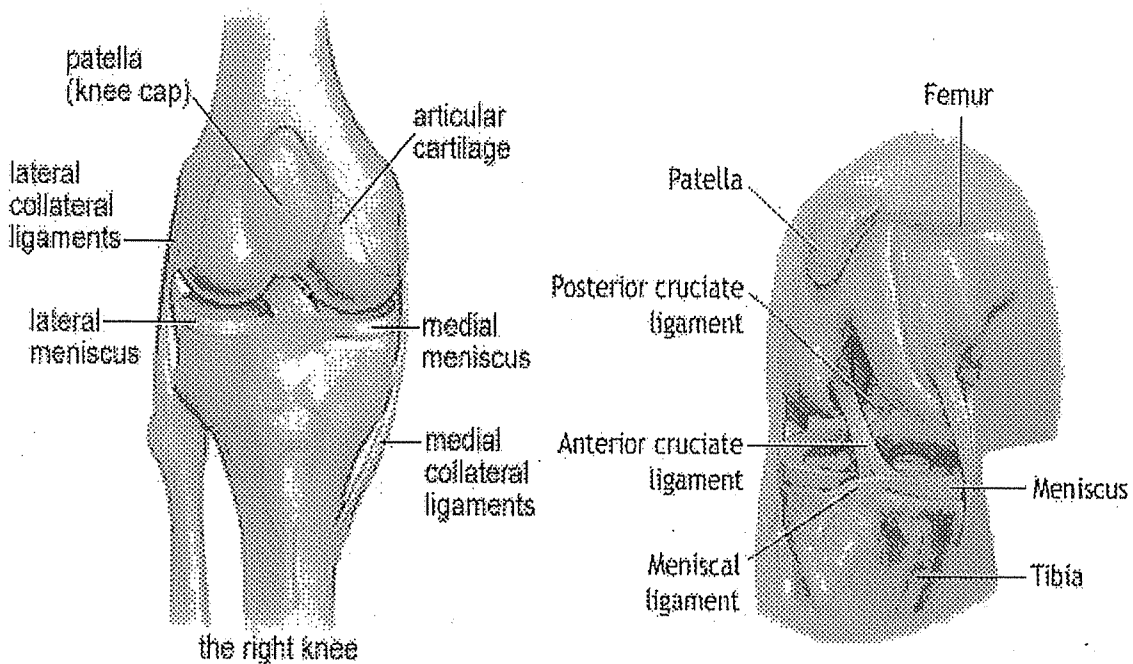
Name: _____
Block: _____

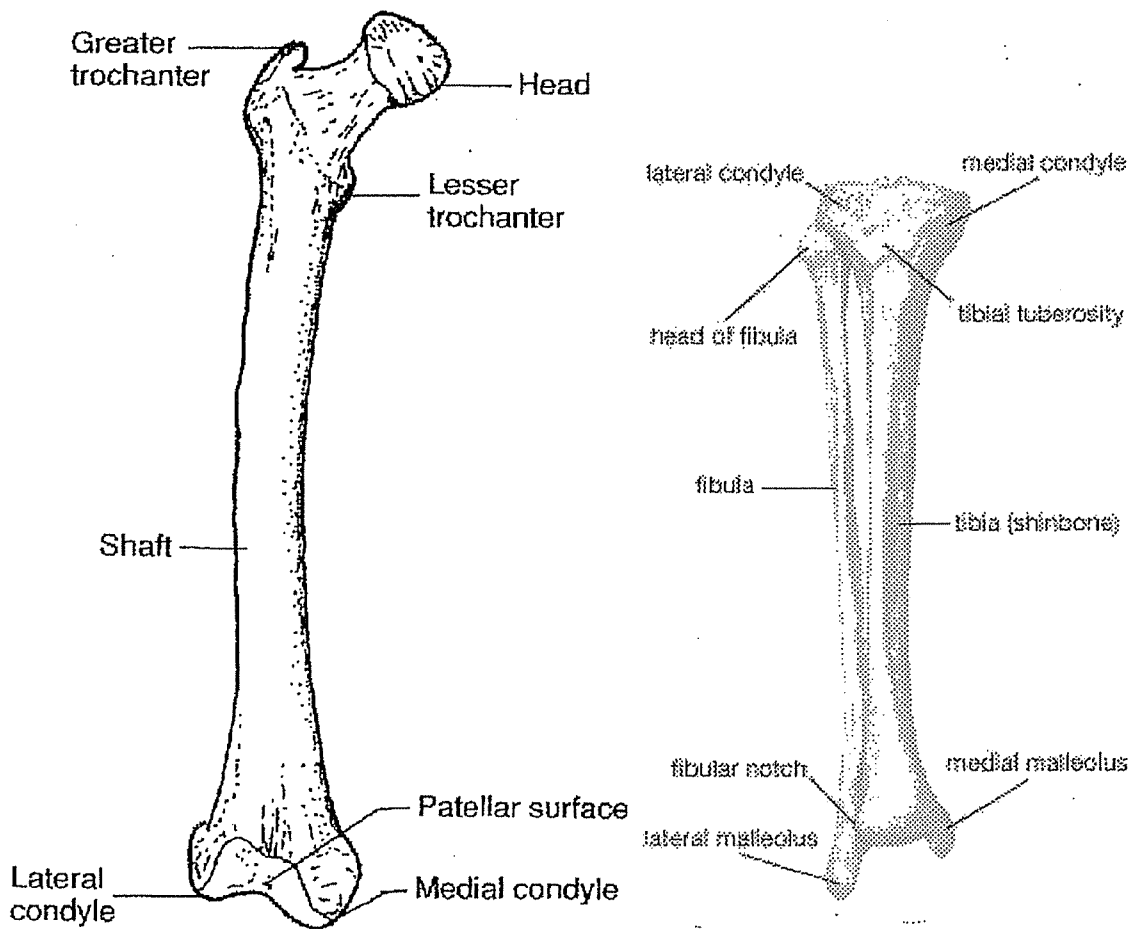
KNEE Dissection Lab

Purpose: To become more familiar with a typical Synovial Joint, by dissecting and identifying the key structural components found in a Pig's knee.

Background Information: The knee joint consists of articulation between the Femur, Tibia and Fibula. Another key skeletal bone around the knee is the Patella. The knee is a Synovial Hinge joint.

- Study each diagram below, then use these diagrams to work your way through the knee dissection.





Materials:

-Working in a group of three, obtain the following:

- | | | |
|------------------|---------------|------------------------------|
| - Scalpel | - Blunt Probe | - Gloves |
| - Dissecting Pan | - Scissors | - Articulated Pig Knee Joint |
| - PaperTowel | - Tweezers | - SAFETY EYE GLASSES |

Procedures/Questions:

* - Locate the Femur, Patella, Tibia, and Fibula.

1. Examine your pig knee. Do you have a right knee or a left knee? _____

2. Give at least two or three landmarks (positional structures) that helped you determine your answer to question #1.
