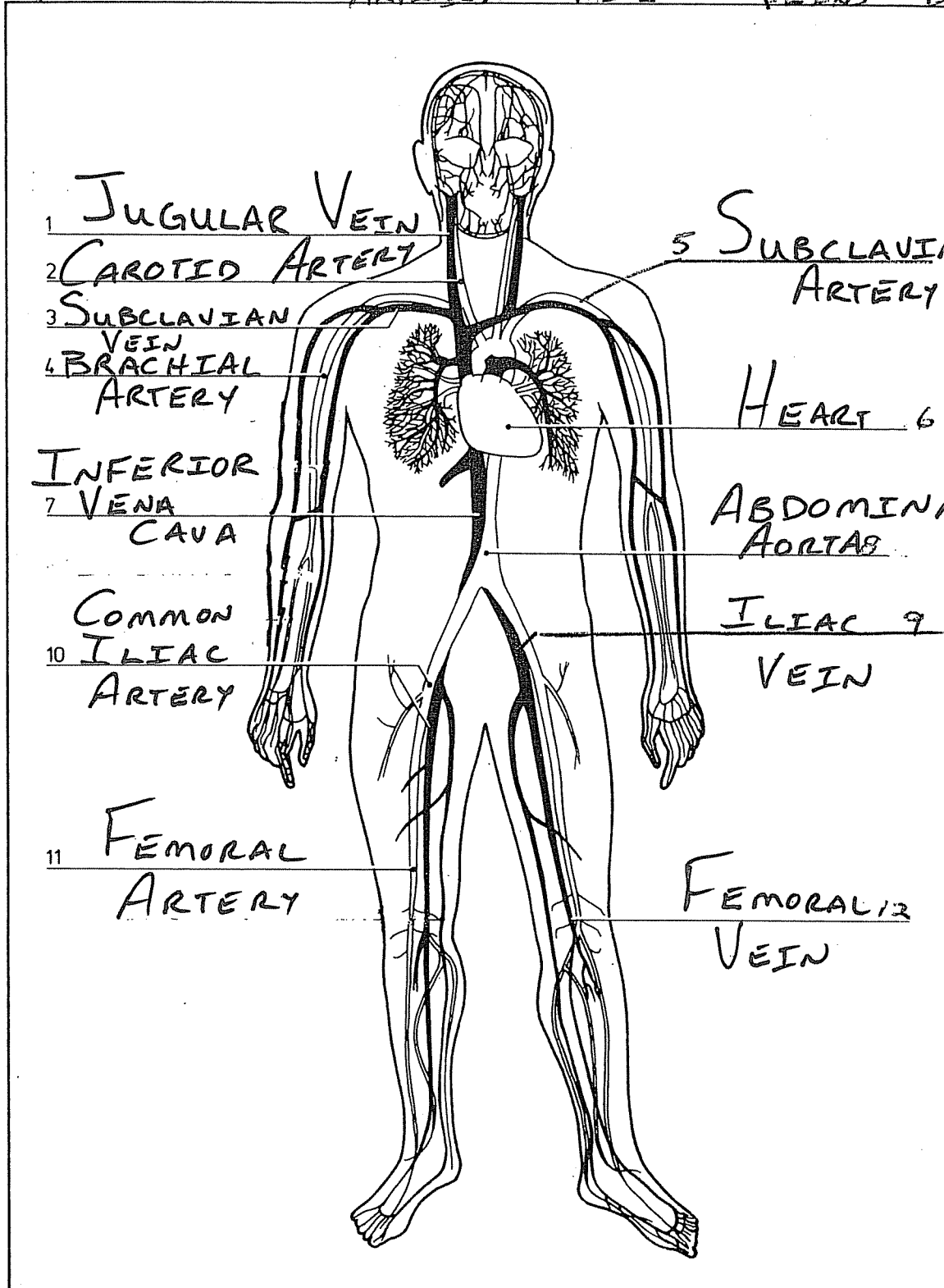


Key diagram

06.001

ARTERIES - WHITE

VEINS - BLACK



1 JUGULAR VEIN

2 CAROTID ARTERY

3 SUBCLAVIAN VEIN

4 BRACHIAL ARTERY

7 INFERIOR VENA CAVA

10 COMMON ILIAC ARTERY

11 FEMORAL ARTERY

5 SUBCLAVIAN ARTERY

HEART 6

ABDOMINAL AORTA

ILIAC VEIN 9

FEMORAL VEIN 12

Anterior view showing major arteries (white) and veins (black)

- jugular vein
- Common carotid artery
- Subclavian vein

Brachial artery

SUBCLAVIAN ARTERY

Inferior vena cava

ABDOMINAL AORTA.

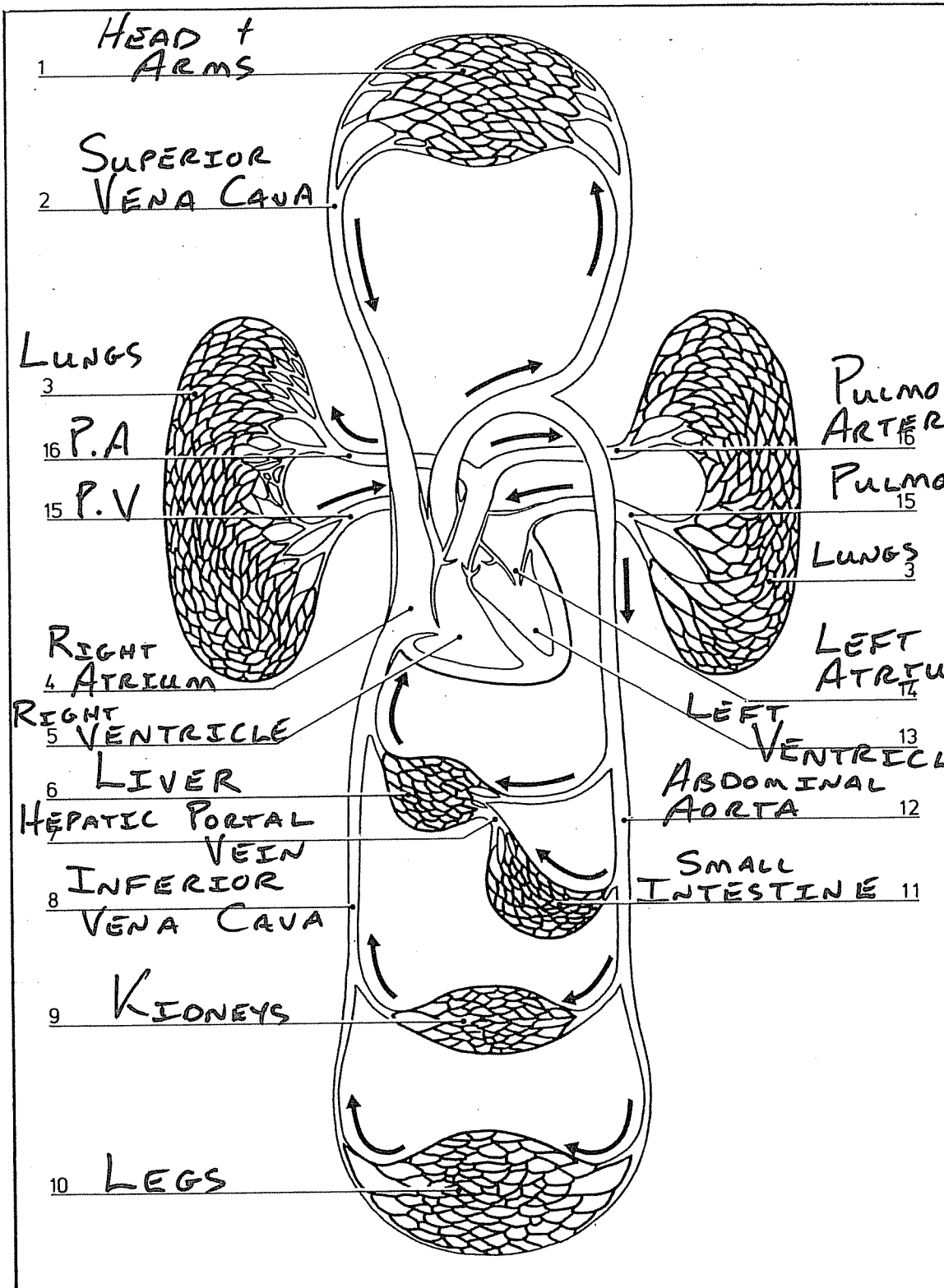
Common iliac artery

ILIAC VEIN  
Femoral artery

Heart  
Aorta  
Femoral vein

Key

# Heart and circulatory system



Schematized diagram showing the heart and peripheral circulation

- Head and arms
- Superior vena cava
- Lungs
- Right atrium
- Right ventricle
- Liver
- Portal vein

- Inferior vena cava
- Kidneys
- Legs
- Intestines
- Abdominal aorta
- Left ventricle
- Left atrium
- Pulmonary veins
- Pulmonary artery