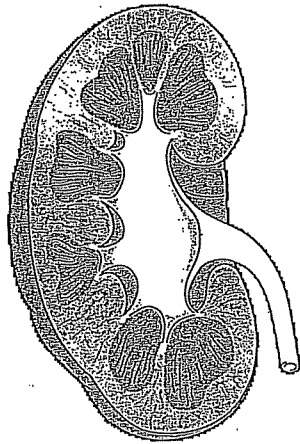


12. Which of the following is not a function of the organ shown below?



- A. to produce urea
- B. to excrete metabolic wastes
- C. to regulate the acidity of the blood
- D. to maintain a constant blood volume

13. Which of the following is a true statement about the collecting duct?

- A. Water diffuses into it.
- B. It responds to aldosterone.
- C. It is the site of tubular excretion.
- D. The fluid in it becomes hypertonic to blood.

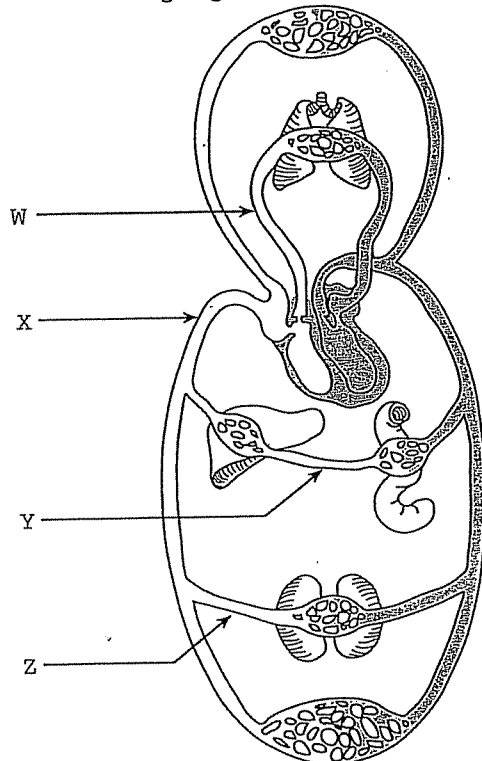
14. The source of antidiuretic hormone (ADH) is the

- A. thyroid.
- B. adrenal cortex.
- C. anterior pituitary.
- D. posterior pituitary.

15. Which of the following would increase as ADH levels rise?

- A. Blood volume.
- B. Glucose levels in the plasma.
- C. Amount of urine in the bladder.
- D. Urea concentration in the plasma.

16. Which vessel indicated on the following diagram would have the lowest concentration of urea?



- A. W
- B. X
- C. Y
- D. Z

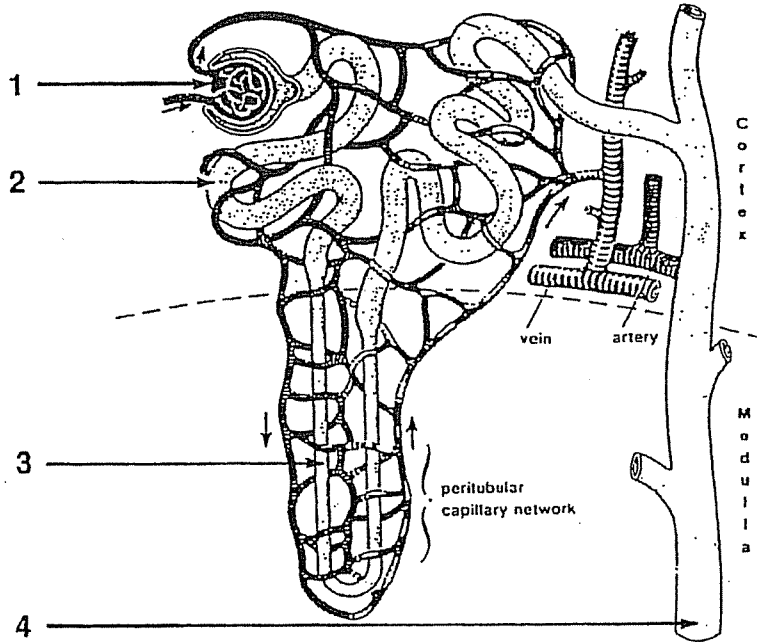
17. Which of the following would cause increased water reabsorption by the kidneys?

- A. increased blood volume
- B. increased cardiac output
- C. decreased blood pressure
- D. decreased ADH secretion

- 18 Increased levels of aldosterone cause
 A. acidic blood.
 C. low blood pressure.

- B. hypotonic urine.
 D. decreased urine production.

Use the following diagram to answer question 19 to 20

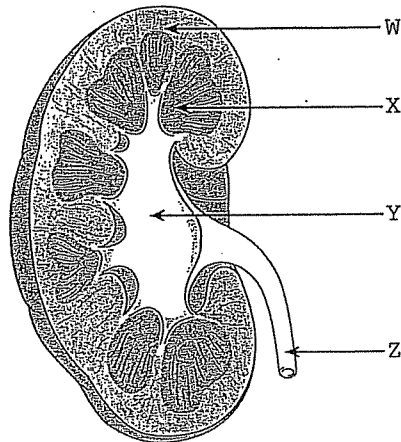


- 19 Which number represents the structure where filtration occurs?
 A. 1 B. 2 C. 3 D. 4

- 20 On which structure will ADH have an effect?
 A. 1 B. 2 C. 3 D. 4

- 21 Consuming alcohol inhibits the release of a hormone, resulting in the production of dilute urine. This occurs because the alcohol is affecting the
 A. thyroid gland. B. adrenal cortex. C. adrenal medulla. D. posterior pituitary.

Use the following diagram to answer question



- 22 Which structure is the renal cortex?
 A. W B. X C. Y D. Z

- 23 The function of the structure labelled Y is to
 A. collect urine.
 C. adjust the pH of the blood.

- B. protect the kidney.
 D. supply blood to the kidney.

Low levels of sodium ions (Na^+) in the body result in the secretion of
 A. adrenalin. B. aldosterone. C. insulin. D. thyroxin.

25.

Damage to the glomerulus could lead to the presence of
 A. excess glucose in the urine
 B. red blood cells in the filtrate
 C. an increase of urea in the renal cortex
 D. a decrease of nitrogenous waste in the filtrate

24



*