

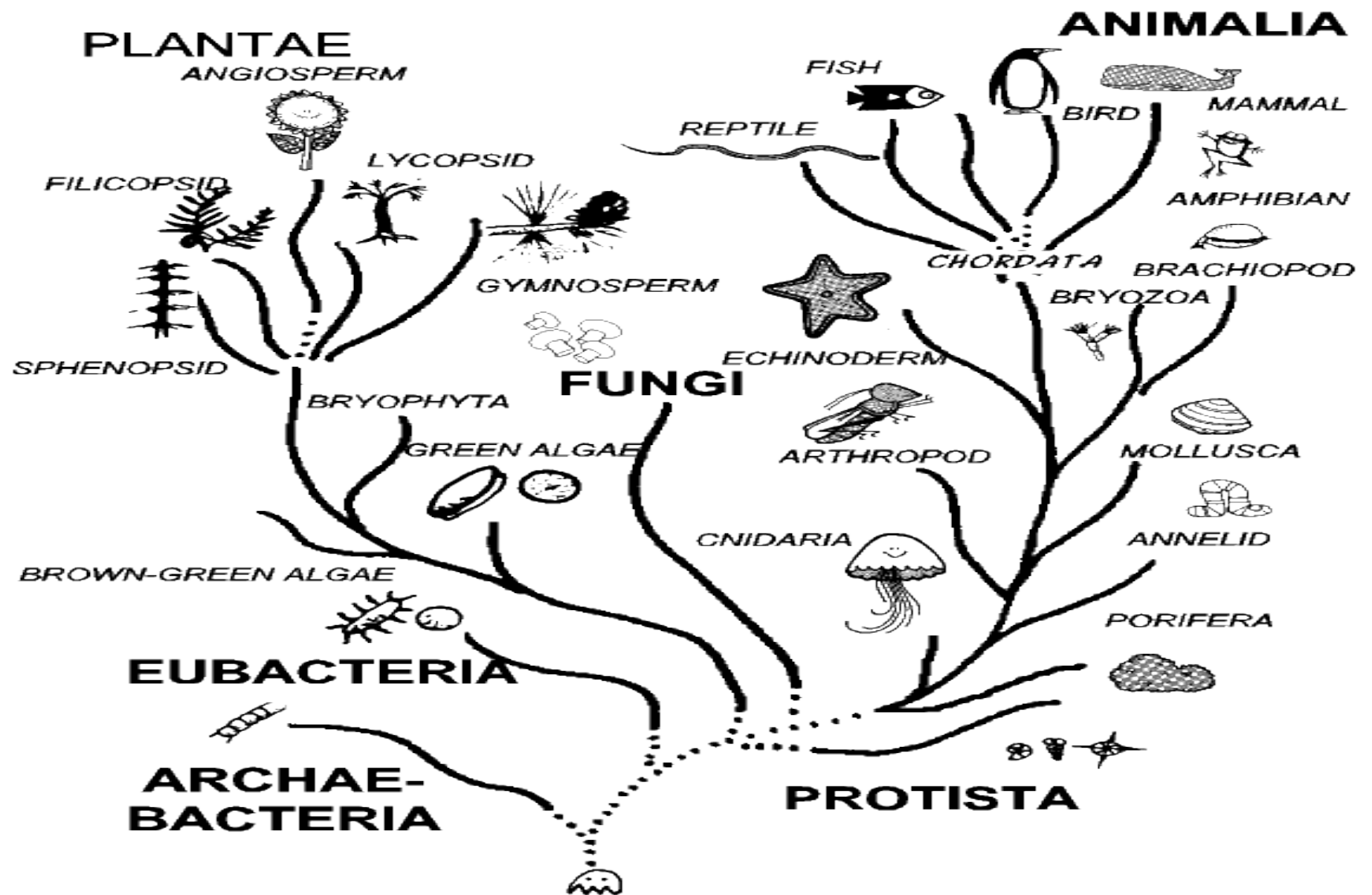
What Is TAXONOMY ??

The branch of science concerned with CLASSIFICATION of ORGANISMS



TAXONOMY

TREE OF LIFE



DICHOTOMOUS KEY

Binomial Nomenclature

Common Name

Tiger



Scientific Name

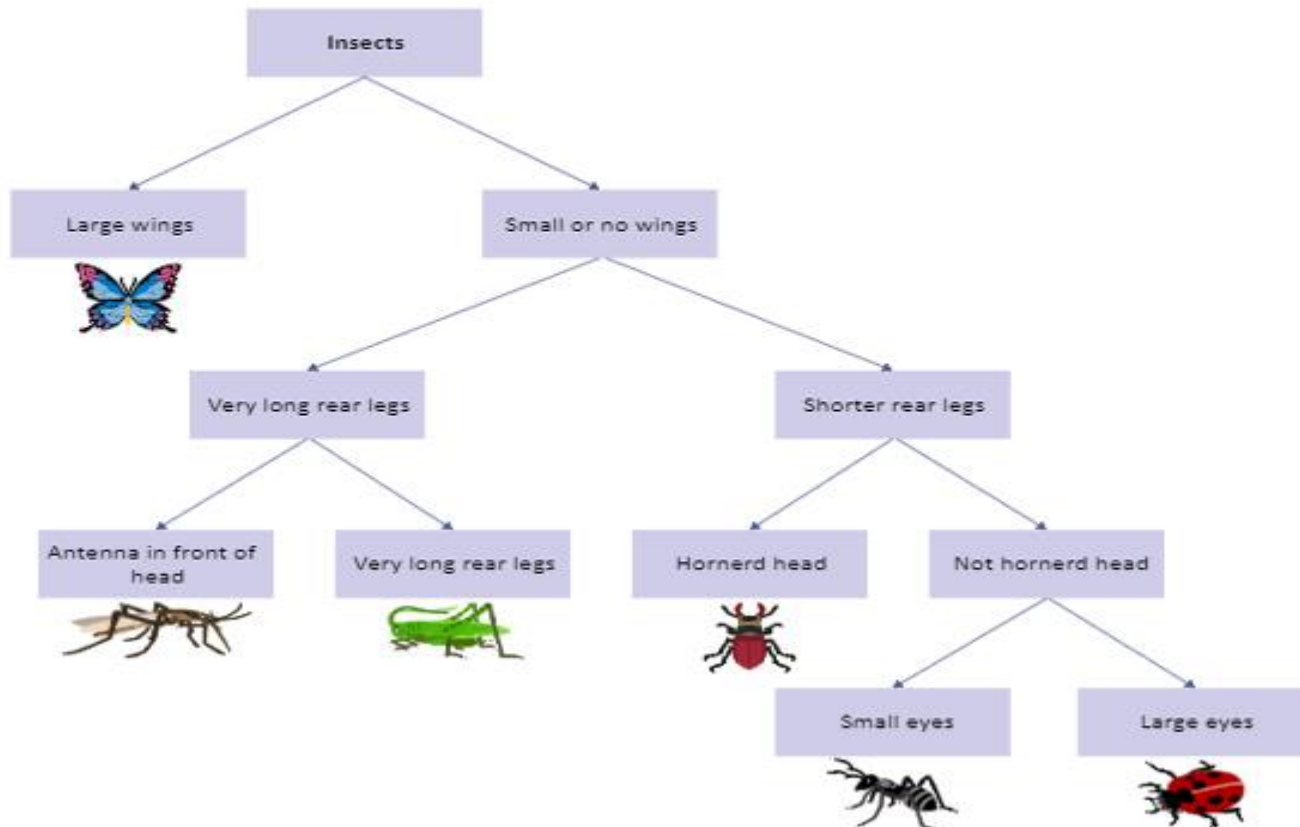
Panthera tigris



Genus

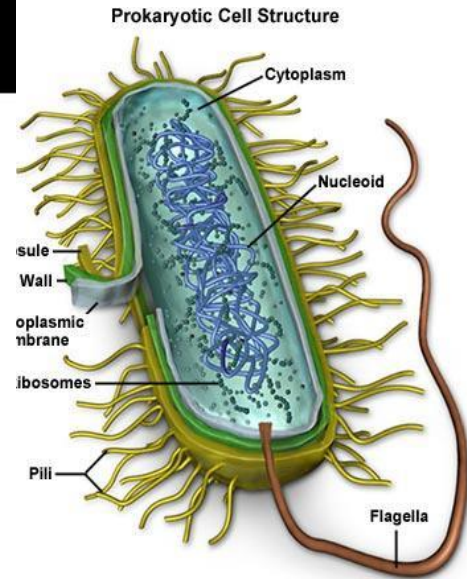
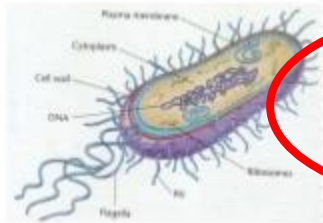
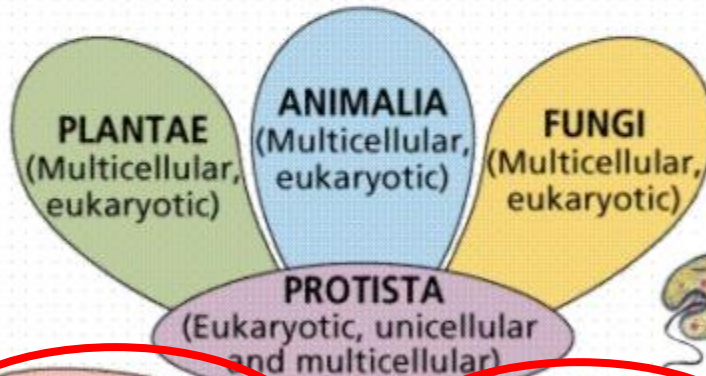
Species

Dichotomous Key for Insects

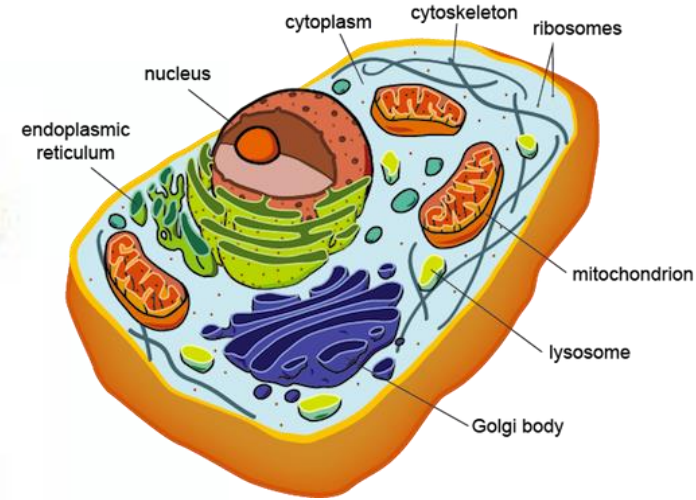
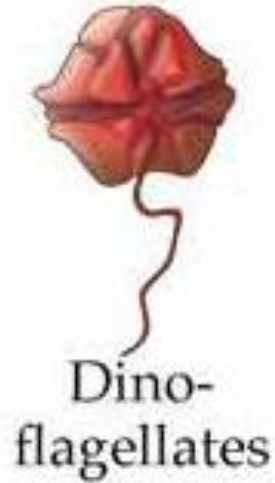


BACTERIA – TWO KINGDOMS

THE SIX KINGDOMS



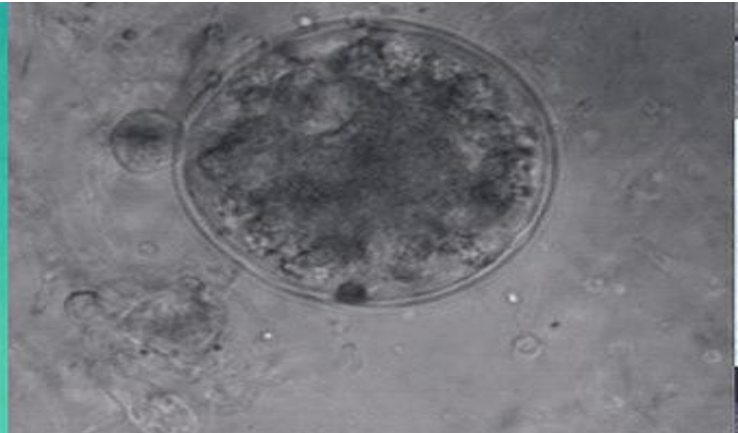
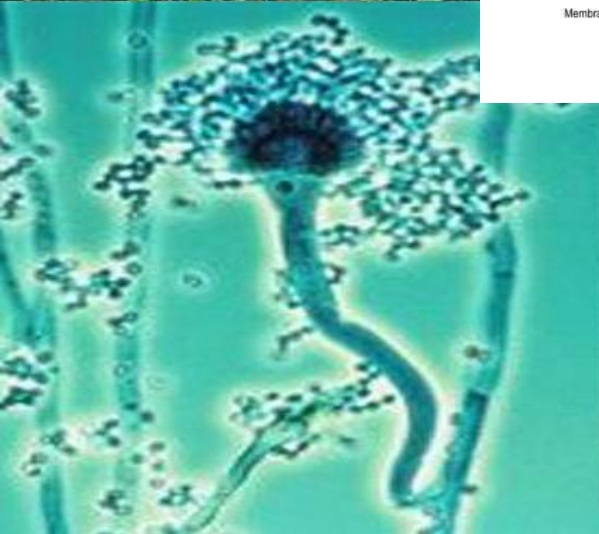
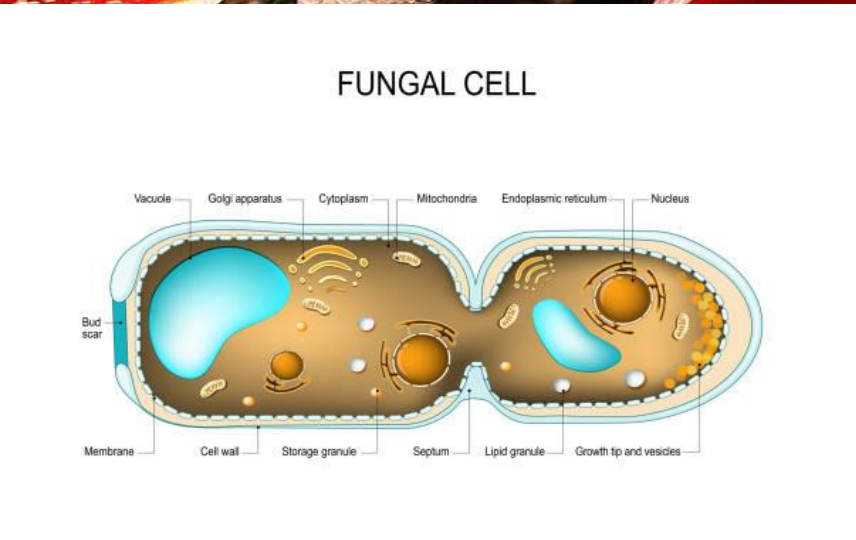
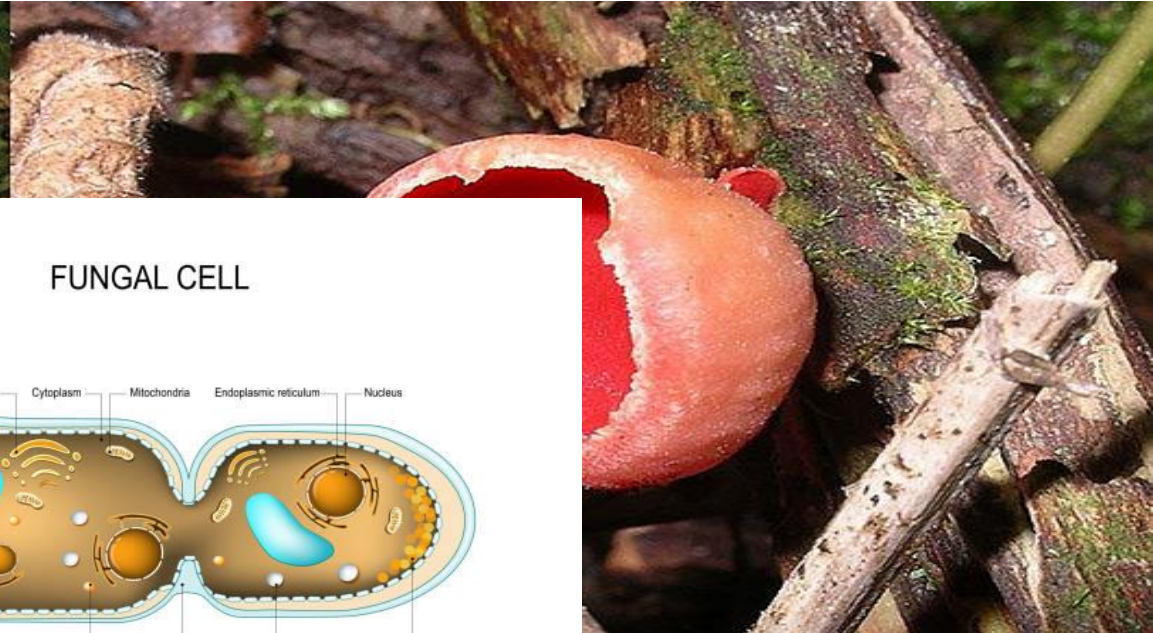
KINGDOM PROTISTA



Unicellular
Eukaryotes

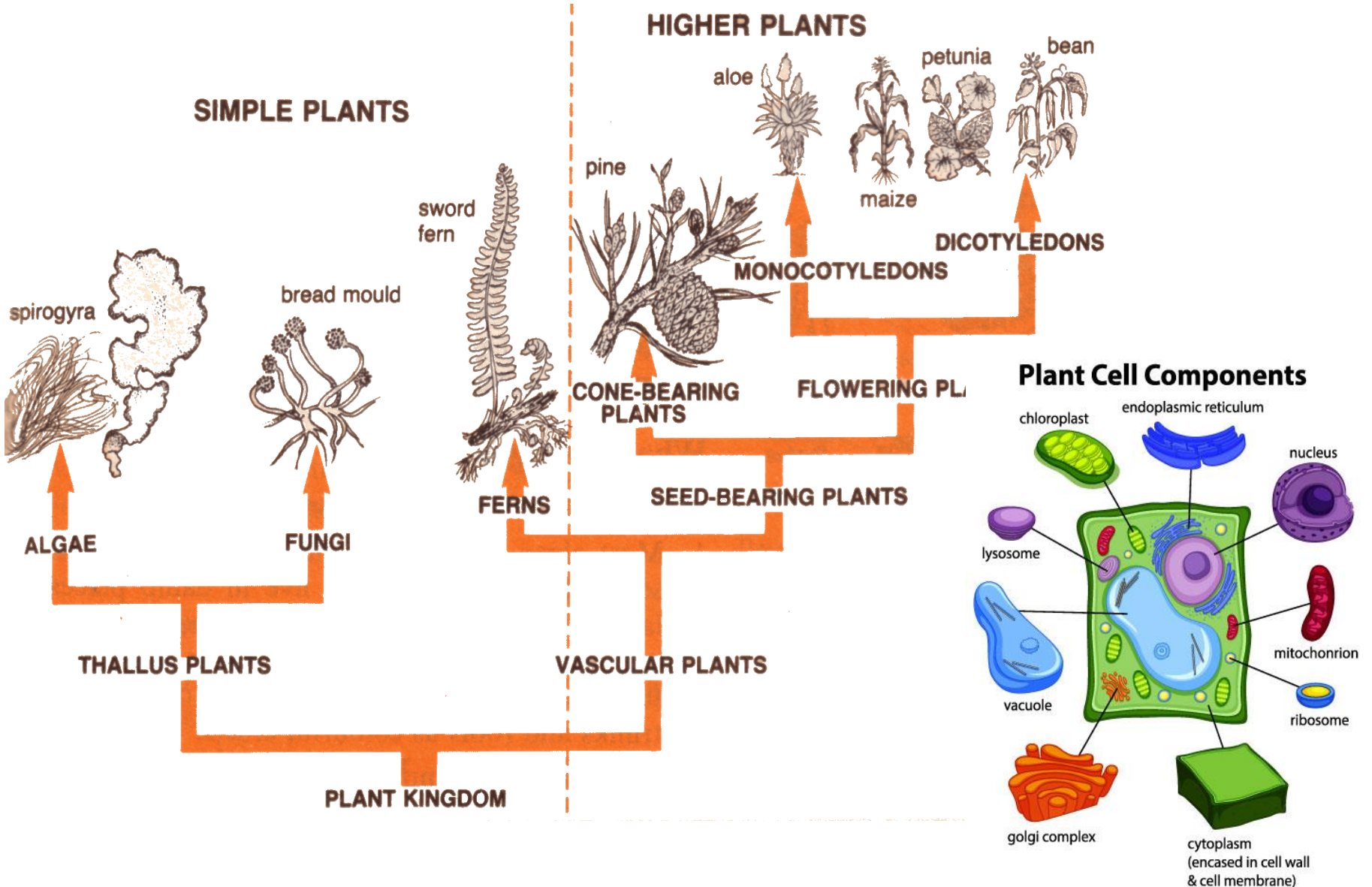
KINGDOM FUNGI

HETEROTROPHIC



KINGDOM PLANTAE

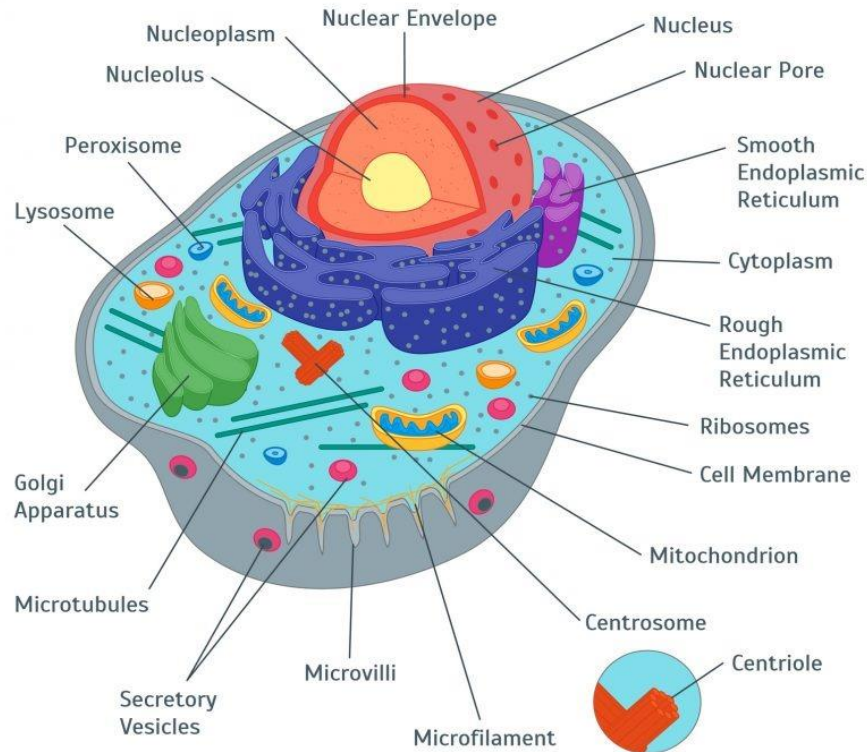
AUTOTROPHIC



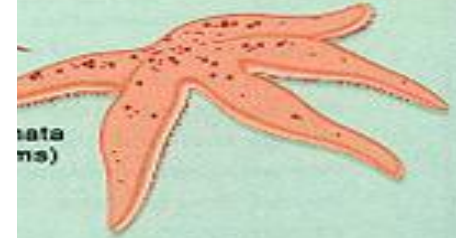
KINGDOM ANIMALIA

HETEROTROPHIC

ANIMAL CELL



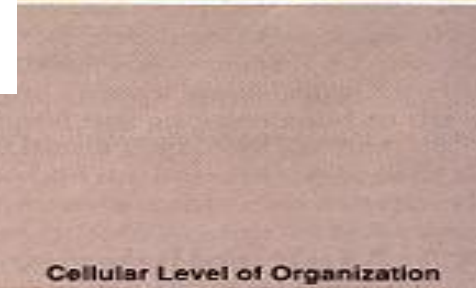
Chordata (Chordates)
Segmented Animals



Nematoda (Roundworms)
Organ Level of Organization



Tissue Level of Organization



Cellular Level of Organization



Annelida (Annelids)



Mollusca (Mollusks)



Platyhelminthes (Flatworms)



Cnidaria (Cnidarians)



Porifera (Sponges)



Ancestral Protista

Cellular Level of Organization