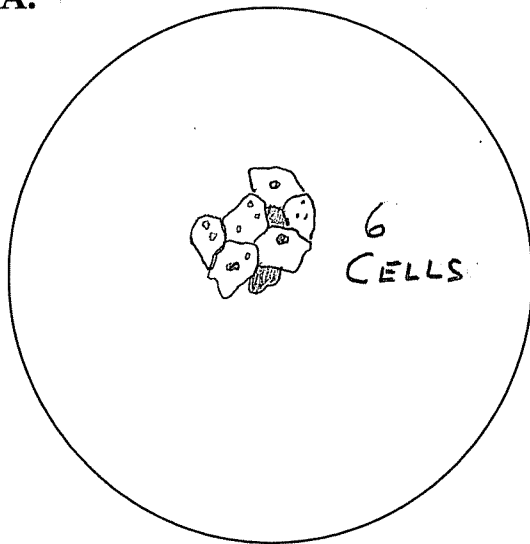


Tissue Drawings

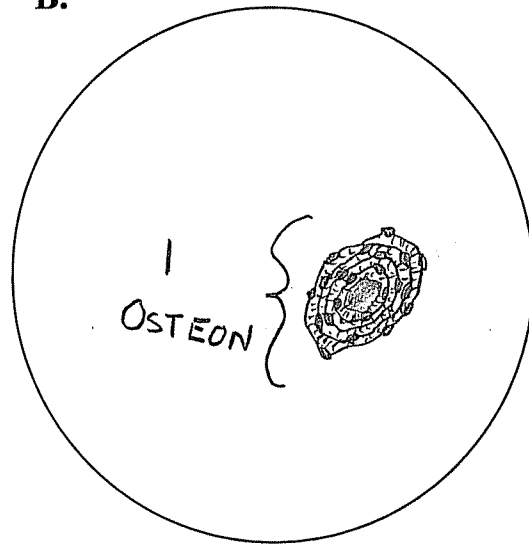
KEY

A.



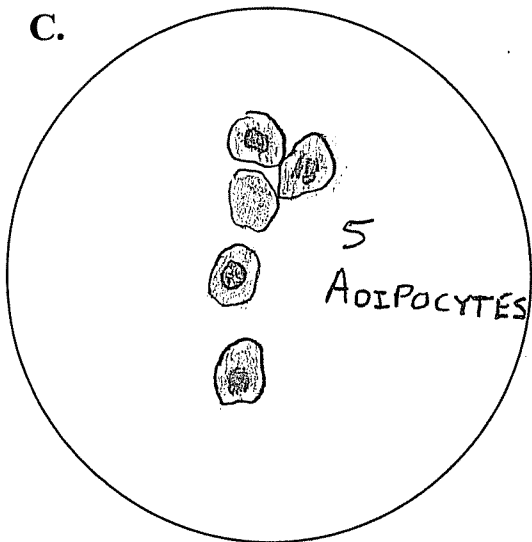
**Tissue name: Simple Squamous**  
**Tissue category: EPITHELIAL**  
**Location in body: Lung, Capillaries**  
**Power of Mag = 400 X**

B.



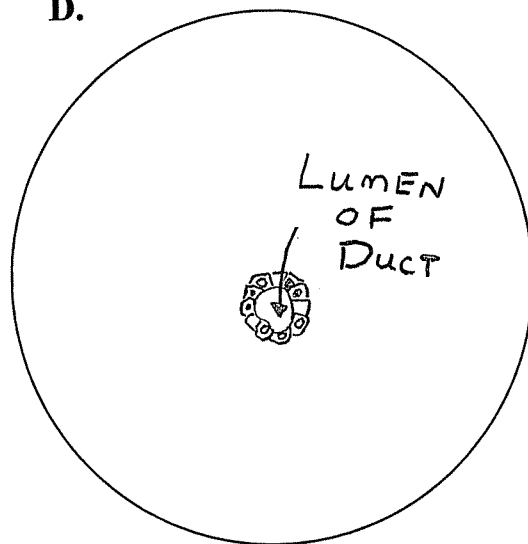
**Tissue name : BONE (Osteon)**  
**Tissue category : CONNECTIVE**  
**Location in body: SKELETON**  
**Power of Mag. = 100 X**

C.



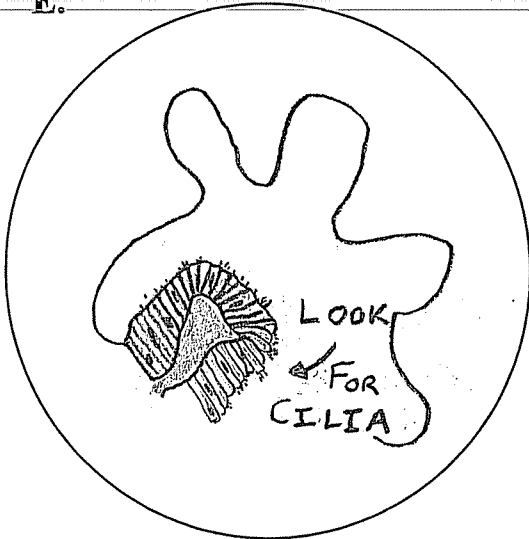
**Tissue name: ADIPOSE**  
**Tissue category:CONNECTIVE**  
**Location in body:Under Skin**  
**Power of Mag = 400X**

D.



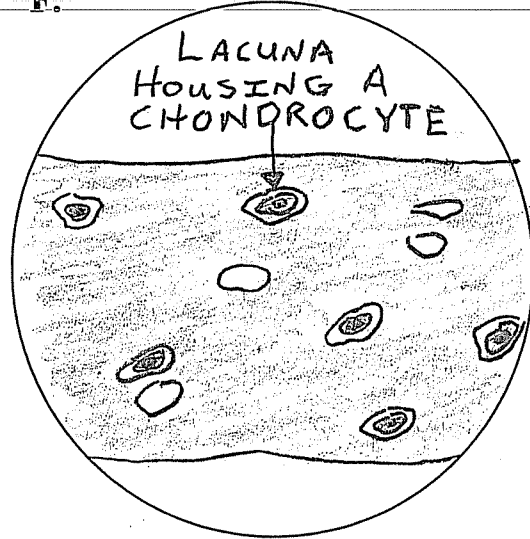
**Tissue name : SIMPLE CUBOIDAL**  
**Tissue category : EPITHELIAL**  
**Location in body: Around Ducts**  
**Power of Mag. =400 X**

E.



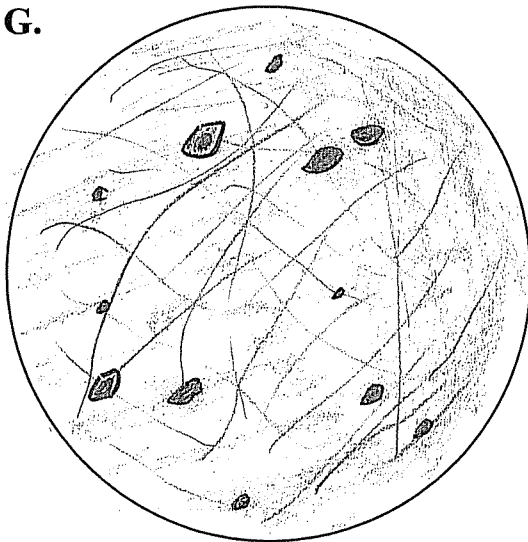
**Tissue name: CILIATED COLUMNAR**  
**Tissue category: EPITHELIAL**  
**Location in body: Airways, Oviduct**  
**Power of Mag = 400 X**

F.



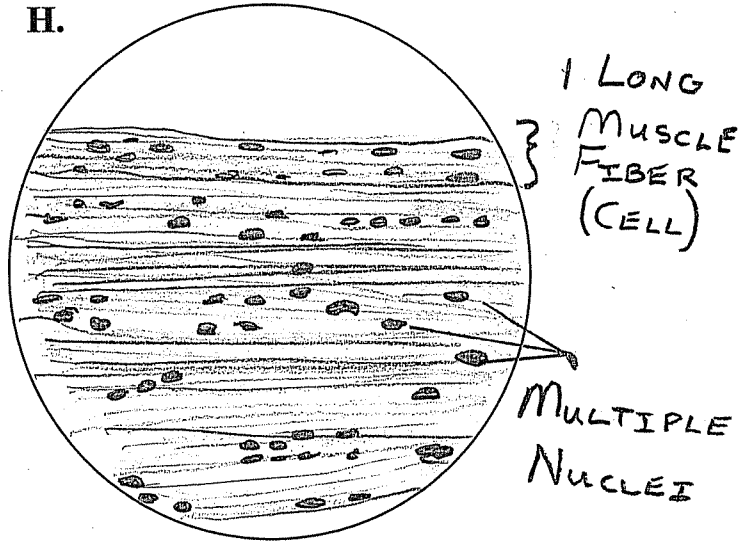
**Tissue name : CARTILAGE**  
**Tissue category : CONNECTIVE**  
**In body: Around Joints, Ears, Nose**  
**Power of Mag. = 400X**

G.



**Tissue name: AREOLAR**  
**Tissue category: CONNECTIVE**  
**Location in body: Between Tissues**  
**Power of Mag = 400 X**

H.



**Tissue name : STRIATED MUSCLE (LS)**  
**Tissue category : MUSCULAR**  
**In body: Attached to SKELETON**  
**Power of Mag. = 400 X**